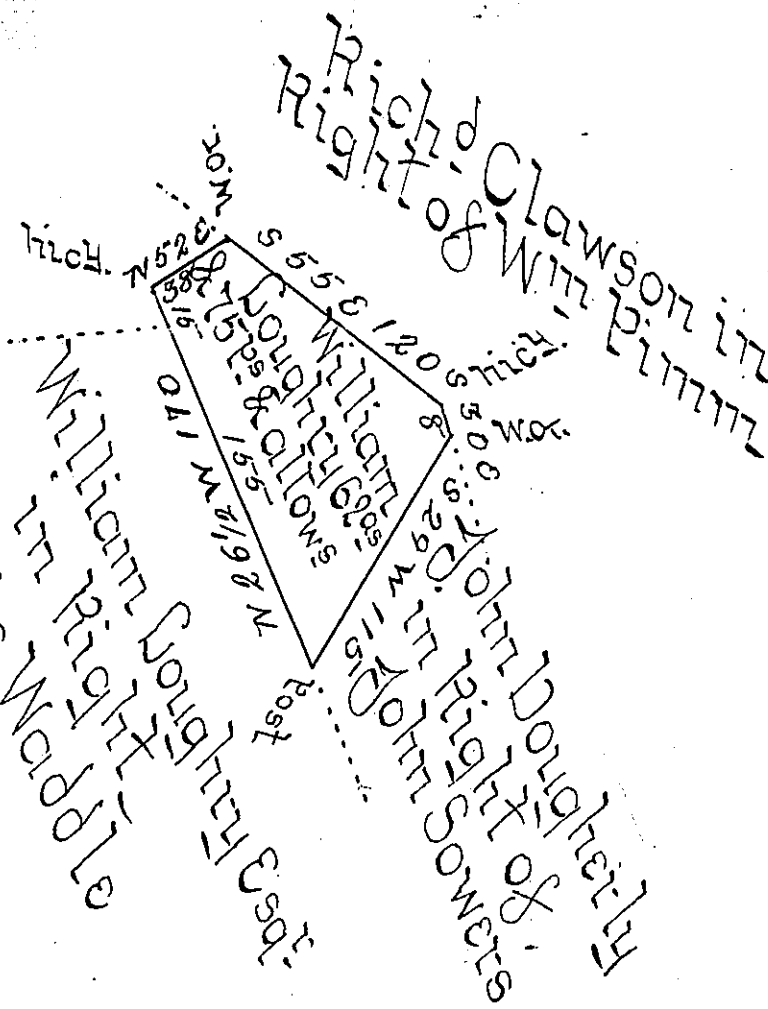


George Kering

Francis Waddle



Surveyd to William Dougherty Esq. on the 25<sup>th</sup> of Sept<sup>r</sup> 1813. The above described Tract of Sixty two acres and seventy five perches and allowance of six P<sup>ct</sup> Cent including an improvement adjoining lands of John Dougherty on the East Charles Kering on the west Richard Clawson on the North and land of said Dougherty on the South in Black Lick Township Indiana County.

By Warrant of the 2<sup>d</sup> of Sept<sup>r</sup> 1813. -

To Rich<sup>d</sup> W. Beech Esq. } Alex<sup>r</sup> Taylor U.S.  
 Surveyor General Penna. }

N.B. the above Described Tract was first improved in April 1788. and Occupied by said William Dougherty Esq. Since that time it is true his Dwelling house is not included in the above tract but the greater part of his Orchard and between thirty and forty acres of his Clear land is included in the above Warrant and Survey. and that is all I can say respecting it.

*IN TESTIMONY* that the above is a copy of the original remaining on file in the Department of Internal Affairs of Pennsylvania, made conformably to an Act of Assembly approved the 16th day of February, 1833, I have hereunto set my Hand and caused the Seal of said Department to be affixed at Harrisburg, this SECOND day of DECEMBER 1902.

*James W. Pitta*  
 Secretary of Internal Affairs.